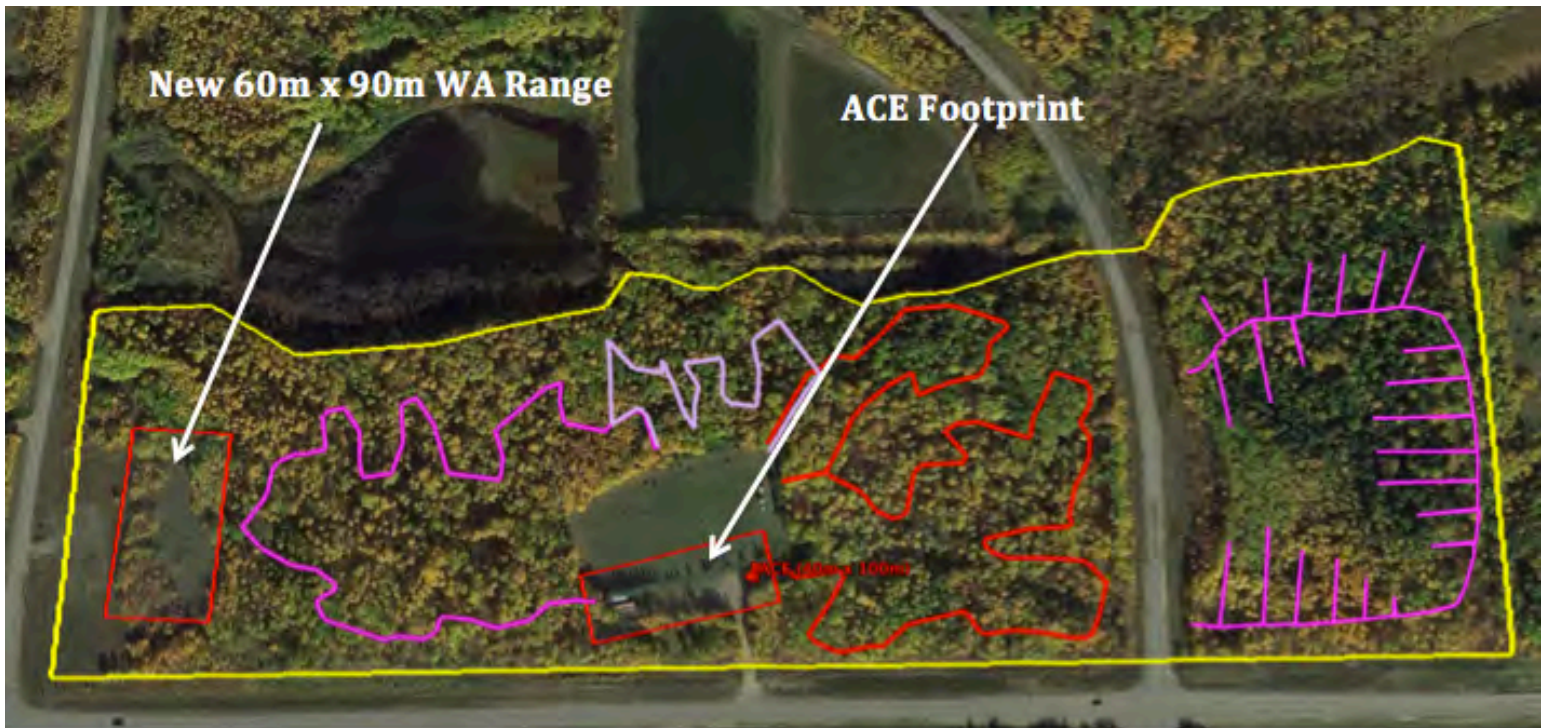


HELP US BUILD THE “ARCHERY CENTRE OF EXCELLENCE”



About the Archery Centre of Excellence:

- **THERE ARE ONLY THREE SIMILAR CENTRES IN THE WORLD RIGHT NOW**
- Strathcona County is donating the title to approximately 33 acres of land for the purpose of creating the Archery Centre of Excellence. The donated land is worth \$255,000
- Location – (30 minutes from Edmonton International Airport) 22352-22380 Township Road 520 Sherwood Park, AB T8C 1E3
- Only minutes from Sherwood Park and Edmonton with full amenities (rental vehicles, restaurants, hotels, shopping, etc.)
- Located in the rolling wooded terrain of the [Beaver Hills Moraine](#), a designated UNESCO Biosphere Reserve.
- Total land base (including titled and leased lands) ~ 46.6 acres
- Three looped trails (approx. 1.1 to 1.3 km per loop) with room for:
 - Four 3D loops (of 20 targets or more per loop)
 - 3 field courses of 14 or more targets per course.
- One existing World Archery (WA) range (see centre of image above – overlaps with footprint for the ACE building on south side of the current WA range) and room for another larger one on the west side of the property. This second one would be 60m wide by 90m long (see red square on left side of image above)



- The ACE building specifications (100% fully accessible):
 - Main floor
 - Indoor range - 40 metres wide by 70 metres long (also allows for a 75 metre wide shooting line for indoor 18m competitions)
 - Flooring, from the shooting line down to 70 metres at end of range, is to be a “turf” field (similar to an indoor soccer field) to enable shooting 3D targets from multiple levels from first and second floor shooting lines. This will prevent arrows from breaking if shoots from 18 feet or higher miss the target (no hard floor to break the arrows!).
 - Washrooms (men and women)
 - Elevator (fully accessible) to give access to second floor for wheelchair athletes/officials
 - Office and classroom space
 - Secure storage space
 - Archery retail service space
 - Second Floor
 - 3D shooting line, overlooking main floor shooting range
 - 18 metre archery range (practice, bow tuning, instruction, smaller competitions)
 - More classroom, meeting and storage space



Programing and additional support plans:

- This is a not-for-profit-facility. All revenue will go back to maintaining and operating the building along with developing a permanent programming fund. This fund will enable:
 - The development of coaching and judging expertise by providing funding to support certification, training and development courses (E.g. bringing in trainers, coaches, judges with national/international expertise to facilitate a full range of opportunities and knowledge/expertise transfer)
 - Programs to train coaches to work with archers with limb differences, sight or mobility issues
 - Access to expertise/skills required to modify equipment for archers with limb differences, sight or mobility issues)
 - Access to already modified equipment to enable new archers with limb differences, sight or mobility issues to get started in the sport
- The ACE will start with a part time Executive Director (unless fundraising and early revenues indicate the ACE can afford a full time director sooner) who will assist users of the ACE as well as manage the ACE and conduct marketing and other administrative support work as directed by the Board of Directors
- The ACE will provide:
 - Indoor and outdoor registered shoots on a year round basis including the ability to bring back the Alberta Summer Classic on a permanent basis (international competition and tourism)
 - A venue for Canada to provide regular, open international tournaments both indoors and outdoors
 - A permanent venue for use by Canada's National, Olympic, Paralympic and development teams to train and compete year round.
 - A venue that will put Canada on the map with World Archery with yet another world-class facility.
 - An archery retail service provider
- Target and 3D archery leagues (indoors and outdoors)
- Regular Juniors Program (based on Archery Canada's "Canbow" development program)
- Coaching services
- School groups, corporate events, birthday parties, and archery lessons (individual/group)
- A venue for local and regional Archery in Schools programs to host larger tournaments
- Regular registered 720 shoots (indoors and outdoors) to enable year round shooting opportunities
- Work experience and training/development opportunities in particular for youth and archers (25 years & under) as part of providing all of these services/programs

www.sherwoodparkarchery.com

<http://sherwoodparkarchery.com/more/building-fund/>

https://www.gofundme.com/f/archery-centre-of-excellence?utm_source=widget&utm_medium=referral&utm_campaign=p_cp+share-sheet